

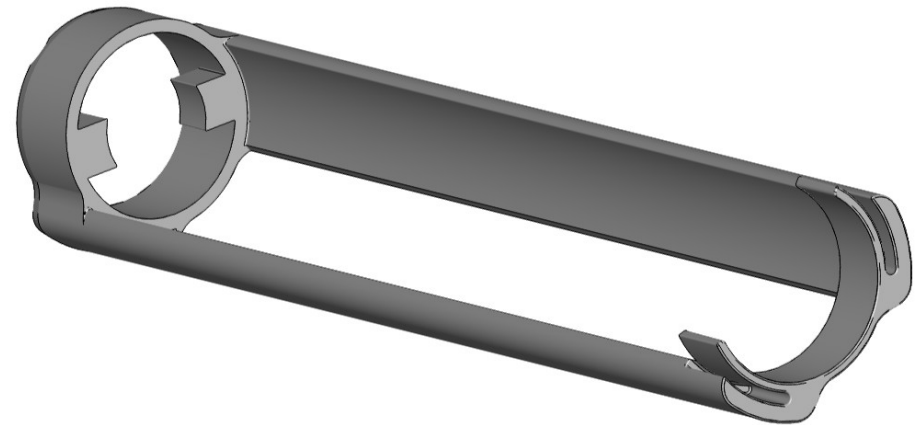


**Parmaco**  
Metal Injection Molding AG

## Complex Geometries for Hunting rifle

### Field of Application:

The latch shown here is a central functional element in the lock of a hunting rifle. It's located in the rear part of the housing and serves as a retainer for the breech. In interaction with the breech, its movement enables the repetition and the ejection of the launched cartridge case. Both high strength and wear resistance are expected from this part.



### MIM Components:

The dimensions and the large weight of this component clearly exceed the pursued limits for MIM components. Its geometry, which is unusually complex and only achievable with other production processes at high expenses, is achievable at reasonable prices using the MIM process, making it a perfect demonstration of the advantages offered by said MIM process.

### Part Specifications:

- Material: AISI 4140
- Weight: 48.40g
- Surface Roughness: Ra 0.8
- Annual quantity: 5'000 pieces
- Post-processing: case-hardened, tumbled, and blackened

